

# ***Welcome to Lee Brigg Infant and Nursery School***



  
**Waterton**  
Academy Trust

- 1. Please register your child and collect your pack**
- 2. Help yourself to refreshments and take a seat**
- 3. Whilst you're waiting, please complete the pupil information sheet, including medical form (dietary and asthma included) and complete with all relevant information.**



**Please like and follow us on:**

**Facebook -  
@LeeBriggWaterton**

# Meet the Staff

Executive Headteacher



Mr Welsh

Head of School



Miss Kilkenny

Foundation Stage Leader



Mrs Windsor

Class Teachers



Miss Khan/Miss Bracken/Mrs Guppy



# Safeguarding

- ▶ Miss Kilkeny - Head of School (Designated Safeguarding Lead)
- ▶ Mr Welsh - Executive Headteacher (Deputy Designated Safeguarding Lead)
- ▶ Mrs Hendy - Senior Office Administrator (Designated Safeguarding Lead - Staff Member)
- ▶ Mrs Guppy - Class Teacher (Designated Safeguarding Lead - Staff Member)

<https://leebrigginfants.org/safeguarding-team/>



# School Calendar

<https://leebrigginfants.org/key-dates-page/>

Autumn 1	Trust INSET Day	Monday 1st September 2025
	INSET Day	Tuesday 2nd September 2025
	Wednesday 3rd September 2025 - Friday 24th October 2025 (38days)	
	Half-Term Week	Monday 27th October 2025 - Friday 31st October 2025
Autumn 2	Monday 3rd November 2025 - Friday 19th December 2025 (35 days)	
	Christmas Break	Monday 22nd December 2025 - Friday 2nd January 2026
Spring 1	INSET Day	Monday 5th January 2026
	Tuesday 6th January 2026 - Friday 13th February 2026 (29 days)	
	Half-Term Week	Monday 16th February 2026 - Friday 20th February 2026
Spring 2	Monday 23rd February 2026 - Friday 27th March 2026 (30 days)	
	Spring Break	Monday 30th March 2026 - Friday 10th April 2026
Summer 1	Monday 13th April 2026 - Friday 22nd May 2026 (23 days)	
	Bank Holiday	Monday 4th May 2026
	Bank Holiday	Monday 25th May 2026
	Half-Term Week	Tuesday 26th May 2026 - Friday 29th May 2026
Summer 2	Monday 1st June 2026 - Thursday 16th July 2026 (34 days)	
		Friday 17th July 2026
	2 INSET Days *	Monday 20th July 2026

# Attendance

## Attendance Ladder



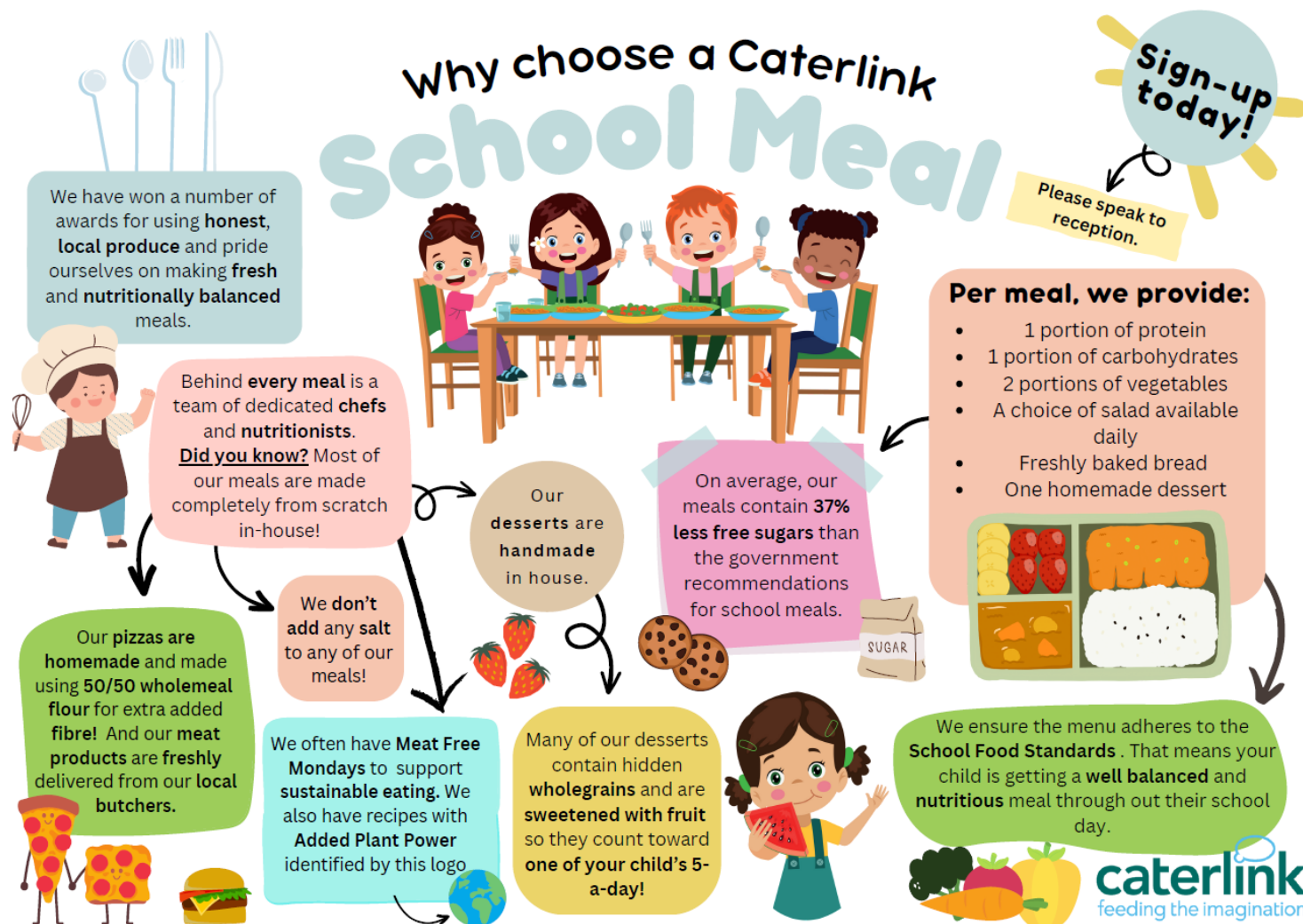


# Medication



# School Dinners

► <https://leebrigginfants.org/meals-page/>



DO YOU KNOW ABOUT... **FREE**

**UNIVERSAL INFANT SCHOOL MEALS?**

**EVERY** child in Reception, Year 1 and Year 2 can have a cooked school lunch

**FRESHLY MADE** **HEALTHY** **NUTRITIOUS**

at absolutely no cost to you! - funded by the Government

Please contact your school for more information!

**caterlink**  
feeding the imagination



► <https://www.fairwaygraphics.co.uk/lee-brigg-uniform>

## Lee Brigg Infants School Uniform



**Embroidered School  
Logo - Lee Brigg Infants  
School**

**£5.25**



**Lee Brigg Infants School  
Cardigan**

**£12.50**



**Lee Brigg Infants School  
Sweatshirt**

**£12.50**



**Lee Brigg Infants School  
Fleece**

**£17.50**





<https://leebriggininfants.org/uniform-page/>

**NORMANTON  
SCHOOL  
UNIFORM  
EXCHANGE**



## OPENING TIMES

**Tuesday: 9am - 2pm**  
**Thursday: 9am - 2pm**  
**Friday: 9am - 2pm**  
**Saturday: 9am - 2pm**

**FREE**  
secondhand  
uniform



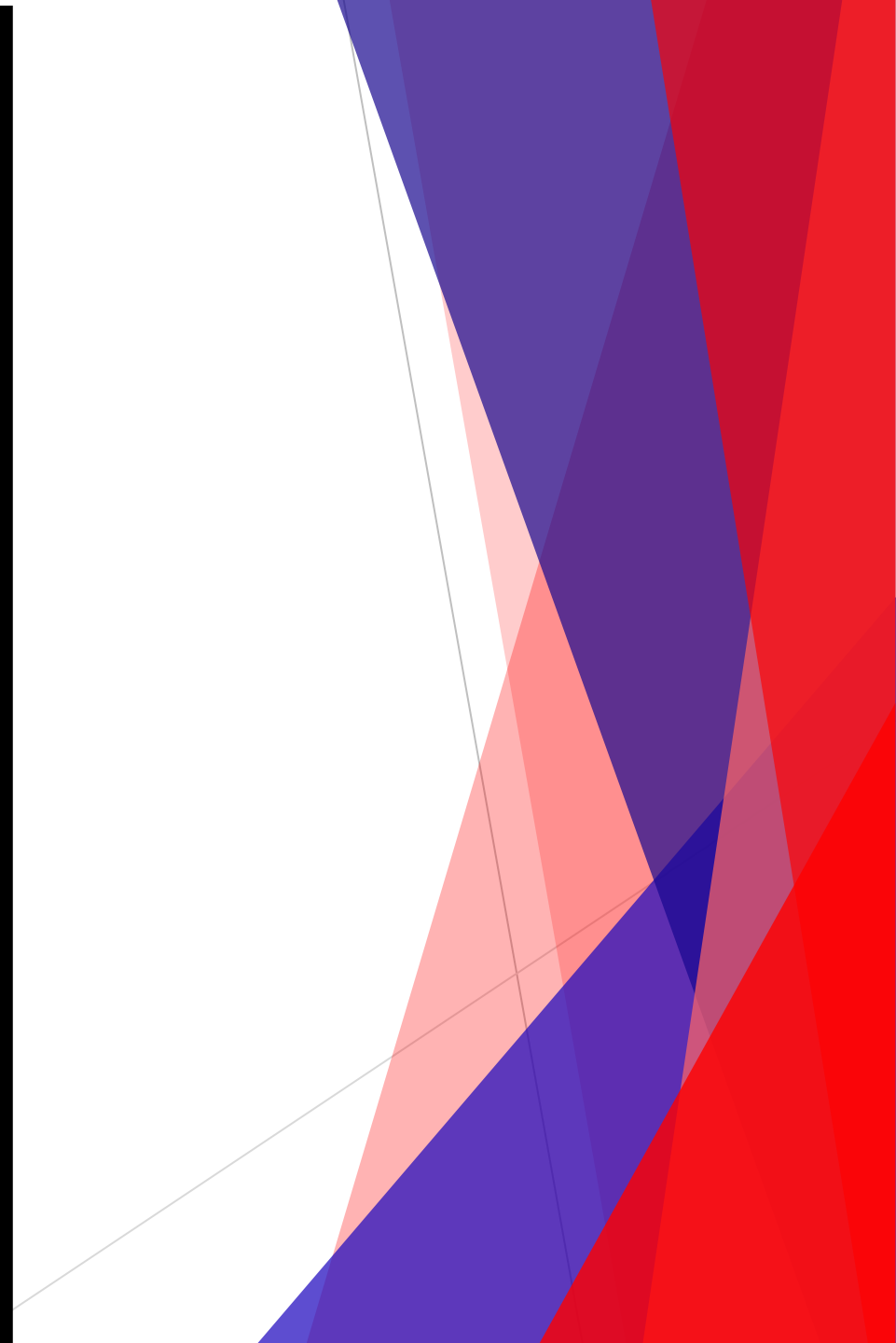
**Find us at:**  
**1st Floor, 20 Market Place**  
**Normanton**  
**WF6 2AU**



**Normanton School Uniform Exchange**



**normyuniform@gmail.com**



# I'm sorry that my uniform got dirty today but it helps to show what I have been learning.

This splodge is part of my lunch. I am trying so hard to use a knife and fork correctly when I eat.

Painting helps me to develop my creativity. Sometimes I accidentally get paint on my shirt as I work.

These marks were made with pens. I am trying so hard to develop my writing and drawing skills.

This playdough stuck to my shirt while I was exploring shapes and textures.

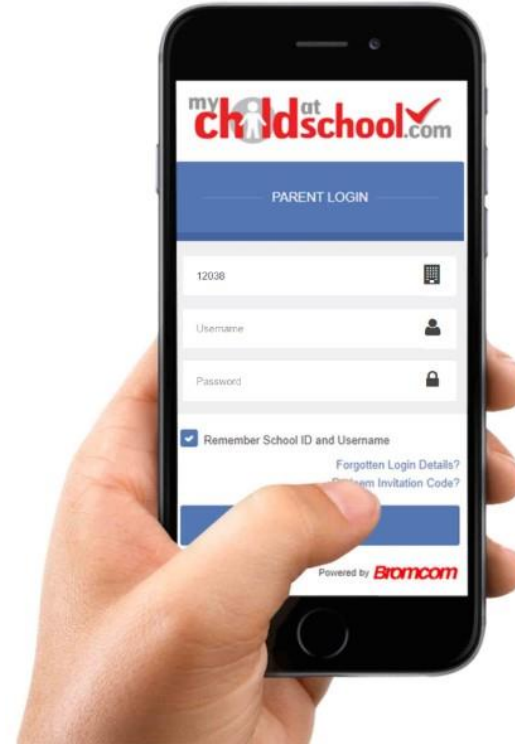
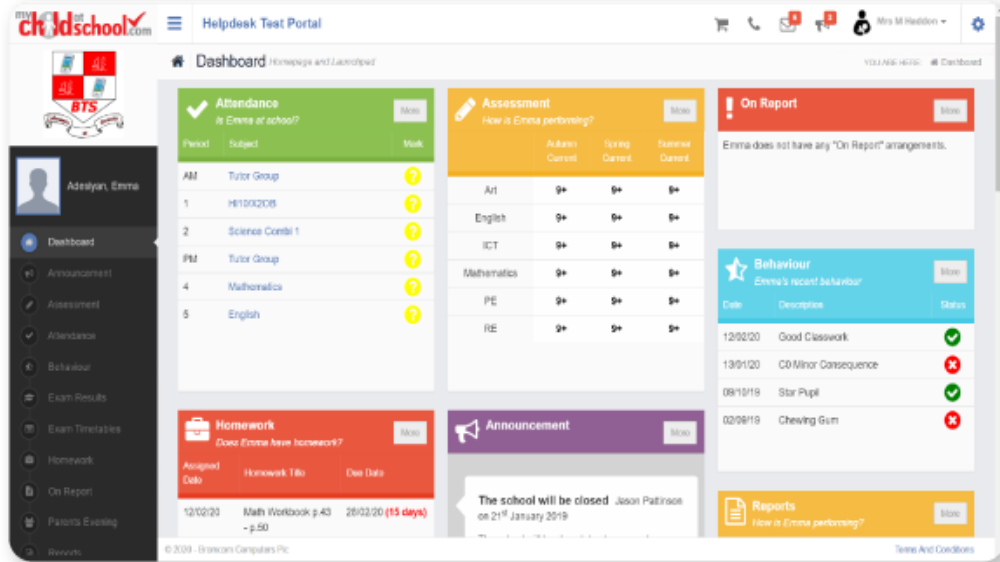
This grass stain shows I have been using the outdoors to develop my physical skills.

Sometimes my uniform comes home a little wet. I learn huge amounts of Science and Maths when I play in the water tray.

The Mud Kitchen is very messy but it helps me to develop my imagination and use of descriptive language.







- School newsletter/Class learning videos to keep you informed of key dates/events/learning.





A proud member of  
**WATERTON**  
ACADEMY TRUST®



[Home](#) [Our Academy](#) [Curriculum](#) [Families](#) [Pupils](#) [Key Information](#) [Contact Us](#)

# Welcome to Lee Brigg Infant & Nursery School

Where children are encouraged to develop roots to grow, and wings to fly!

# The school day

7.30am - Breakfast Club - £3 per session. (A week in advance)

8.40am - School doors open for children. If you arrive past 8:55am, your child will receive a late mark.

12:00pm - Lunch time

All reception children are eligible for Universal Free School Meals.  
There are daily vegetarian options for children to choose in school.

3.15pm - School day finishes and you can collect your child.



# A typical day in Reception

<b>8:40am</b>	School starts and class teachers will welcome children at the classroom door!
<b>9:00am</b>	Morning yoga & registration.
<b>9:10-10:00 am</b>	Story of the week followed by Continuous provision- Learning through play.
<b>10:15 am</b>	Dough disco followed by Phonics in small groups.
<b>10:45am</b>	Continuous provision & Outdoor Learning.
<b>11:30am</b>	Maths input and small group number activities.
<b>12:00-</b>	Lunch time.
<b>12:45pm</b>	Children will have a settling activity before registration at 1pm.
<b>1:00pm</b>	Topic Learning- Understanding the world/Expressive arts and design.
<b>1:30pm</b>	Continuous provision, group activities & outdoor learning
<b>2:30 pm</b>	Guided reading followed by circle time/song & rhyme time and story time.
<b>3:15</b>	Home time

The Reception timetable is flexible.  
Changes are made throughout the year to meet the learning needs of the children.





# Snack time

- ▶ All children will be provided with their own school water bottle which will be cleaned and filled in school- children have access to water bottles all day.
- ▶ Milk is provided free of charge to all children until the term that they turn 5- after this you can buy your child's milk for a small fee.
- ▶ All children have access to fresh fruit daily- children can choose when to eat their snack at the snack area in the classroom.

Please inform teachers of any medical or dietary requirements.





## Over the Summer:

- ▶ Practise dressing/fastening coat.
- ▶ Lots of talking: promoting communication.
- ▶ Enjoy singing and reading together.
- ▶ Toileting.
- ▶ Eating with a knife and fork.
- ▶ Turn taking games.
- ▶ Lots of drawing, colouring, playdough and Lego to build hand strength.
- ▶ Recognising own name /name writing.
- ▶ Counting!

# September Transitions

Starting school can be an anxious time for both children and their parents. We aim to make this transition into school as smooth and positive as possible. To do this we have our stay and play sessions and build up to full time days during the first week of school.

Day	Times
Wednesday 3 <sup>rd</sup> September	$\frac{1}{2}$ cohort 8:40am-12:00pm $\frac{1}{2}$ cohort 1:00pm- 3:15pm
Thursday 4 <sup>th</sup> September	$\frac{1}{2}$ cohort 8:40am-12:00pm $\frac{1}{2}$ cohort 1:00pm- 3:15pm
Friday 5 <sup>th</sup> September	$\frac{1}{2}$ cohort 8:40am-12:00pm $\frac{1}{2}$ cohort 1:00pm- 3:15pm
Monday 8 <sup>th</sup> September	All cohort 8:40am-3:15pm (Stay for lunch)

# Stay and play session

*As part of our transition we are inviting you and your child to spend to spend some time in the reception classrooms on the following dates:*

**Tuesday 17<sup>th</sup> June & Wednesday 2<sup>nd</sup> July 2025**  
**2-3pm**

please bring your child to the reception entrance  
(by the ramp.)

There will be a whole school transition on Wednesday 9<sup>TH</sup> July. This will be from 9:15am-12:15pm and your child will be provided with a lunch.



**Waterton**  
Academy Trust



***Please hand in your pupil information sheet and medical information sheet to a member of staff as you leave the hall.***

**01924 967609**

**[leebriggadmin@watertonacademytrust.org](mailto:leebriggadmin@watertonacademytrust.org)**

**Facebook –  
@LeeBriggWaterton**

**<https://leebrigginfants.org/>**